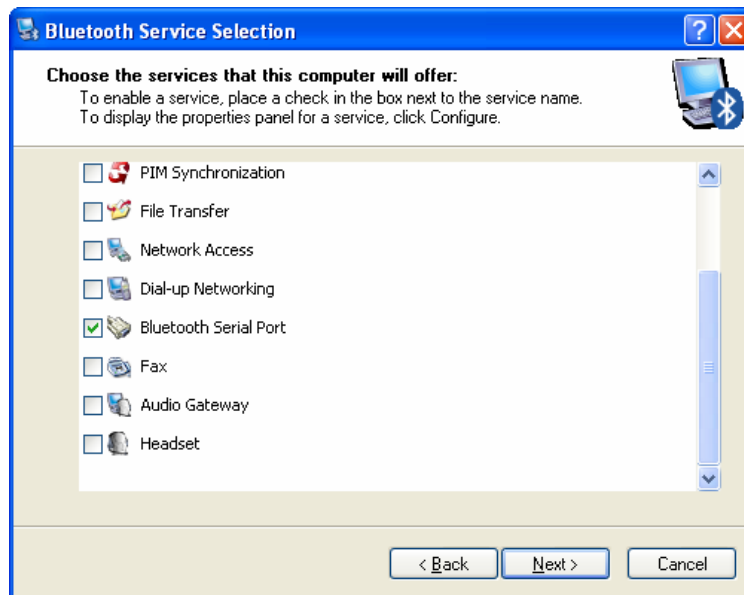


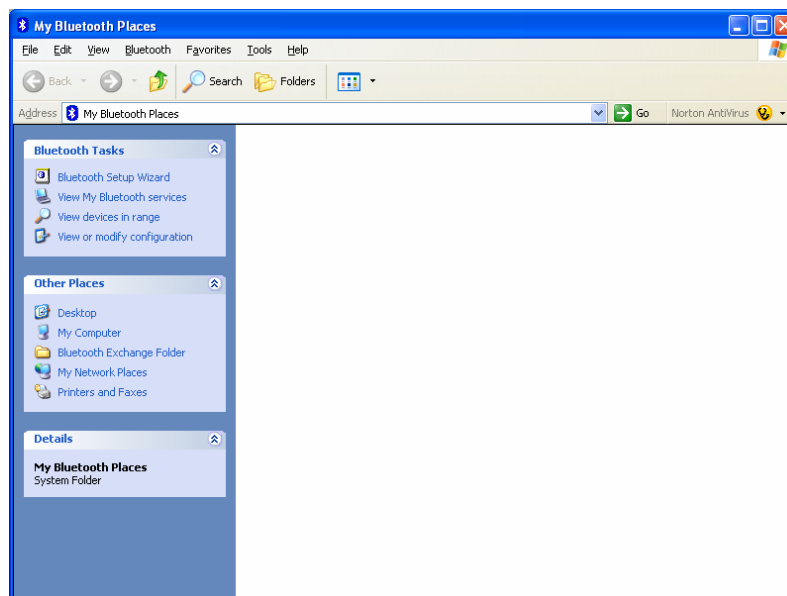
PetScan RT100 v2

BlueTooth Installation Guide

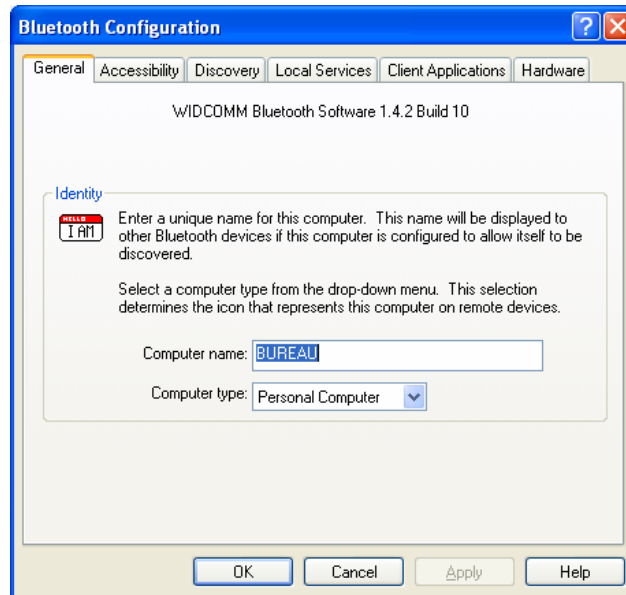
1. First of all, you have to install “Mitsumi WML-C51APR Bluetooth USB adaptor”. During installation, take care to validate “Bluetooth Serial Port” option :



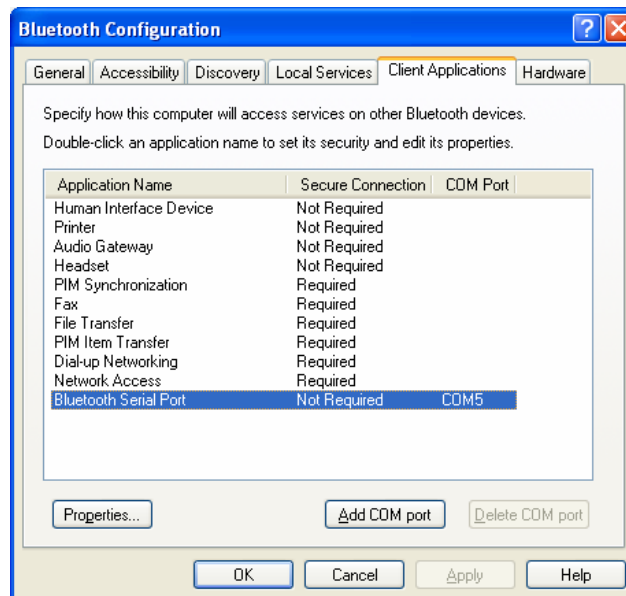
2. Plug the USB adaptor into an available USB port on your computer. Then, open “My Bluetooth Places” application :



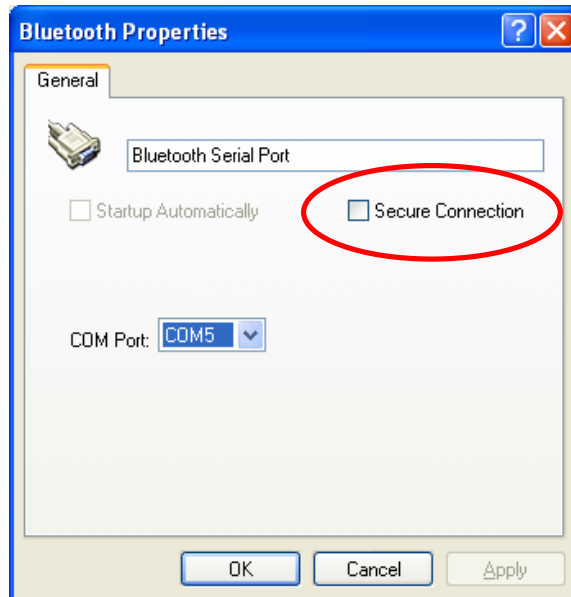
3. In “Bluetooth” menu, click on “Advanced Configuration” :



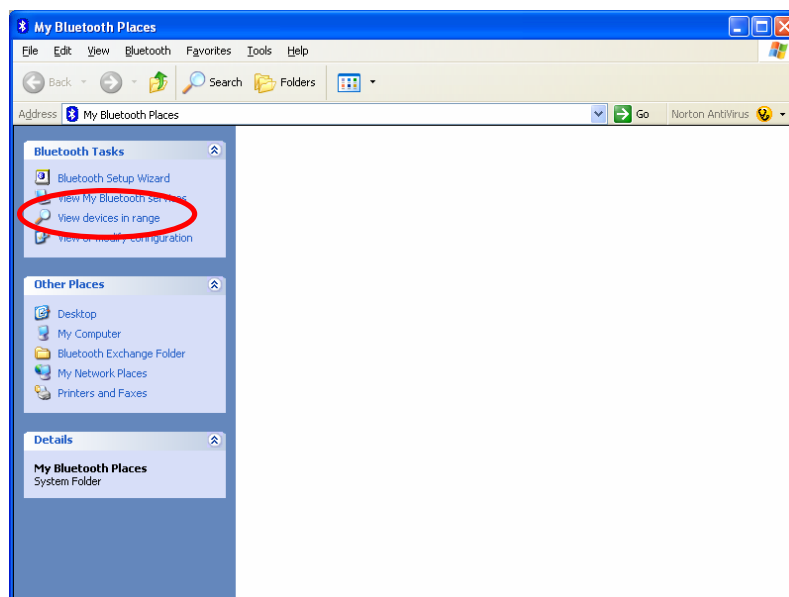
4. In “Client Applications” menu, select “Bluetooth Serial Port” application :



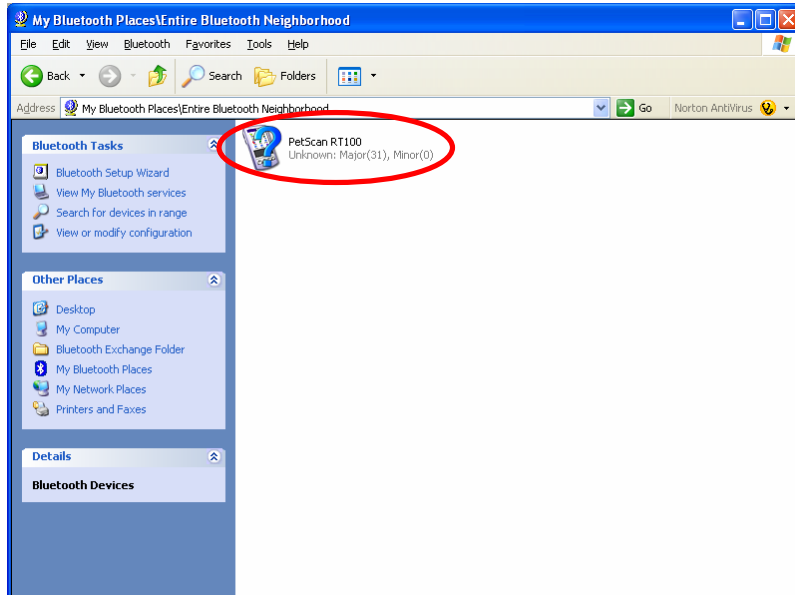
5. Click on “Properties...”, to disable “Secure Connection” case :



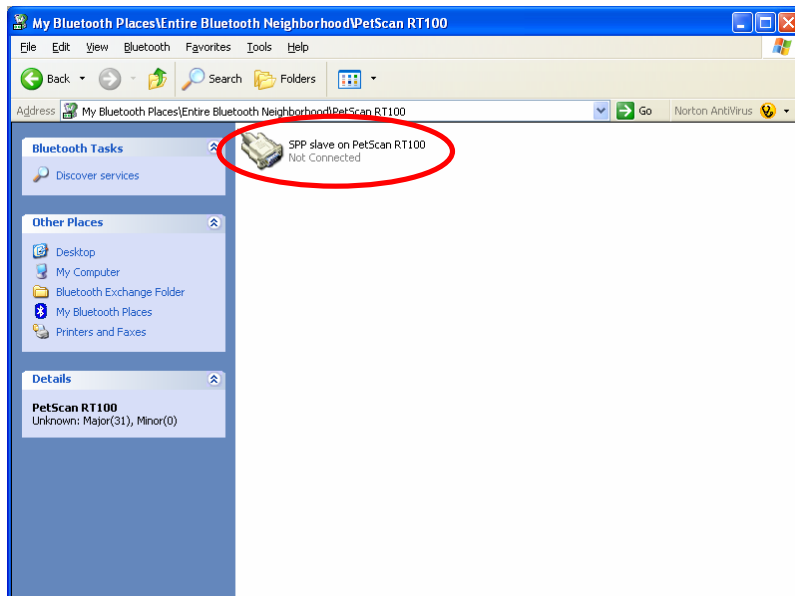
6. Press “OK” to finish configuration... Now, you can use PetScan RT100v2...
7. Click on “View devices in range” to detect reader :



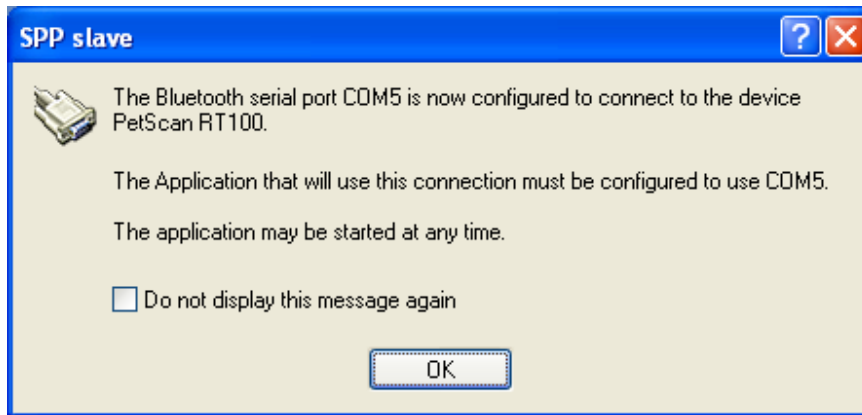
8. Double click on “PetScan RT100” :



9. Double click on “PetScan RT100” :



10. Connection is established, and the Bluetooth serial port associated with reader is specified in “SPP slave” window :



Now, you can use Bluetooth serial port as any hardware serial port...